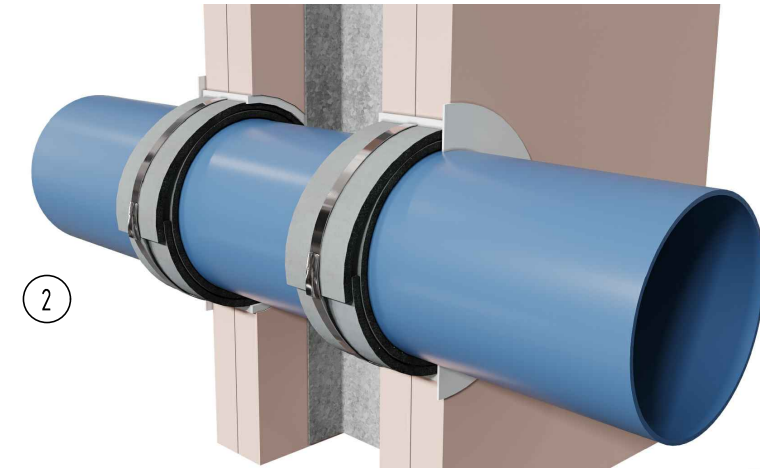
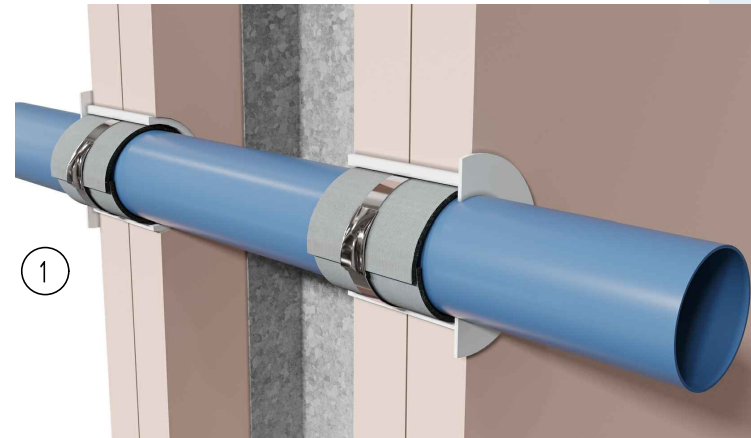




Step-by-step installation instructions:

1. Ensure the aperture is free from dust and debris.
2. Install AGNI-Wrap around the pipe allowing a 10mm overlap (1 layer for a DN 20mm pipe and 2 layers for a DN 63mm pipe).
3. Fix AGNI-Wrap with an AGNI-Strap at mid-width.
4. Recess within the annular gap and flush with the surface of the wall.
5. Fill annular gap with AGNI-Seal to a depth of 26mm i.e. full depth of plasterboard lining.



System ID# FC829

Technical Information

Substrate	<ul style="list-style-type: none"> • 2x 13mm FR plasterboard-lined wall with 64mm steel framing (uninsulated) • ≥116mm concrete wall 	
Service range	DN 20mm PE pipe	DN 63mm PE pipe
Size	Inner diameter (ID): 15.5mm Outer diameter (OD): 20mm Thickness (T): 2mm Thickness (T): 3mm	Inner diameter (ID): 50.5mm Outer diameter (OD): 63.5mm Thickness (T): 6.5mm
AGNI-Wrap	1 layer	2 layers
Annular gap	Min: 4mm Max: 12mm	Min: 8mm Max: 14.5mm
AGNI-Products	AGNI-Seal, AGNI-Wrap	
Protection installation	Symmetrical	

Compliance Information

Standards	AS1530.4-2014, AS4072.1-2005
FRR/FRL	-/120/120
Reference	RIRF24019 (AP-050FCC)



Agnitek
FIRE RATED TECHNOLOGY

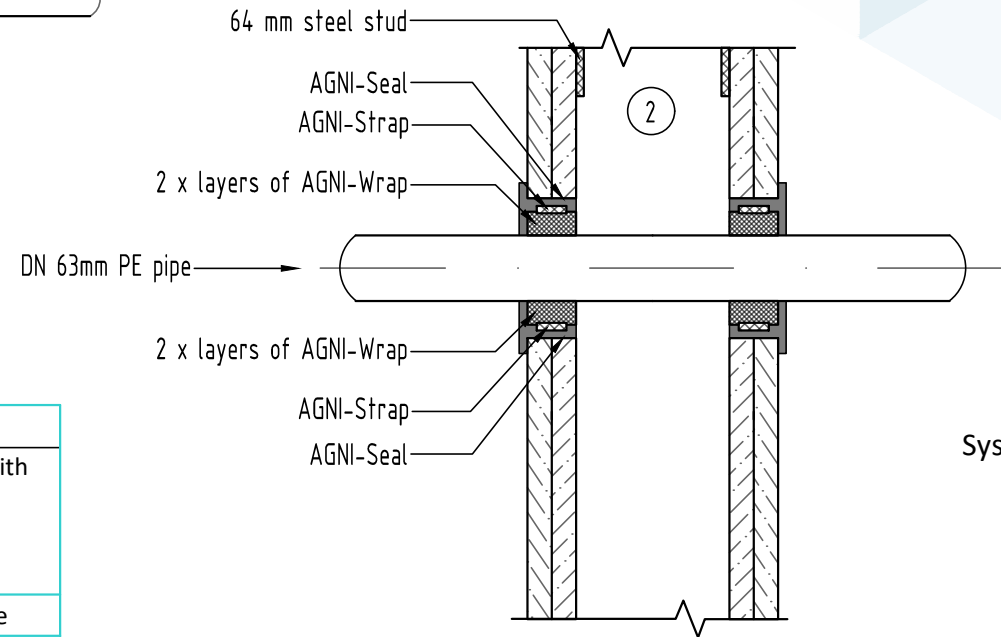
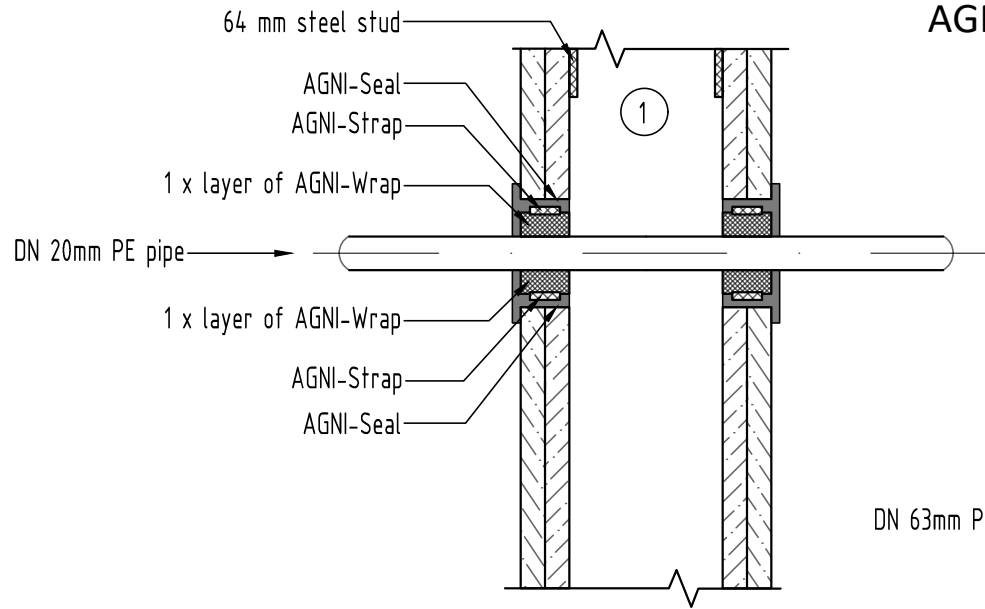
8 Clare St Bayswater
VIC 3153, AUSTRALIA
www.agnitek.com.au

Disclaimer

Agnitek reserves the right to modify product specifications without prior notice due to its ongoing research, development & certification programme. The information in this document is provided in good faith and is intended for guidance purposes only. Any accompanying drawings are solely for illustrative purposes. Since Agnitek cannot oversee installation methods or ensure site conditions, no warranties, expressed or implied, are intended regarding the products' actual performance. We do not accept liability for any loss, damage, or injury from using this information. Please take a look at the test reports displayed on a relevant AGNI-System webpage for all compliance specifics.

Date	20.06.2024
------	------------

AGNI-Wrap in 2 x 13mm Plasterboard Wall or 116mm Concrete Wall 20 & 63mm Blue PE Pipe Max FRR -/120/120



Technical Information

Substrate	<ul style="list-style-type: none"> • 2x 13mm FR plasterboard-lined wall with 64mm steel framing (uninsulated) • ≥116mm concrete wall 	
Service range	DN 20mm PE pipe	DN 63mm PE pipe
Size	Inner diameter (ID): 15.5mm	Inner diameter (ID): 50.5mm
	Outer diameter (OD): 20mm	Outer diameter (OD): 63.5mm
	Thickness (T): 2mm	Thickness (T): 6.5mm
	Thickness (T): 3mm	
AGNI-Wrap	1 layer	2 layers
Annular gap	Min: 4mm	Min: 8mm
	Max: 12mm	Max: 14.5mm
AGNI-Products	AGNI-Seal, AGNI-Wrap	
Protection installation	Symmetrical	

Compliance Information

Standards	AS1530.4-2014, AS4072.1-2005
FRR/FRL	-/120/120
Reference	PF24019

System ID# FC829



8 Clare St Bayswater
VIC 3153, AUSTRALIA
www.agnitek.com.au

Disclaimer
Agnitek reserves the right to modify product specifications without prior notice due to its ongoing research, development & certification programme. The information in this document is provided in good faith and is intended for guidance purposes only. Any accompanying drawings are solely for illustrative purposes. Since Agnitek cannot oversee installation methods or ensure site conditions, no warranties, expressed or implied, are intended regarding the products' actual performance. We do not accept liability for any loss, damage, or injury from using this information. Please take a look at the test reports displayed on a relevant AGNI-System webpage for all compliance specifics.

Date	20.06.2024
------	------------